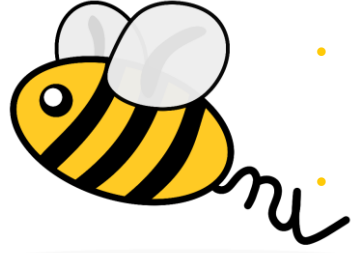


Study NKH: development and behavior



- Are you the parent of a child with mild to moderate NKH (non-ketotic hyperglycemia)?
- Is your child 6 - 17 years old?
- AND DO YOU WANT TO CONTRIBUTE TO RESEARCH ON THE DEVELOPMENT AND BEHAVIOR OF THESE CHILDREN ???

THEN YOU ARE ELIGIBLE TO PARTICIPATE IN THIS STUDY !!!

ARE YOU INTERESTED?

1. **Click on the following link for more information:**
<https://redcap.gbiomed.kuleuven.be/surveys/?s=RMT7LY8MC4MENM4N>
2. You will then receive a **short questionnaire**. If you fill this in, we can review if you are eligible to participate in the study.
3. If you qualify, we will ask you to complete **8 online questionnaires**. Full participation takes approximately 1 hour and 30 minutes.

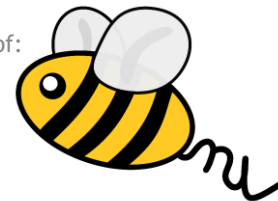
Participation is entirely voluntary

This study (MP017713) was approved by the Ethical Committee (EC) Research UZ/KU Leuven

Contact details:
Dr. Liesbet Van Hirtum
Liesbet.vanhirtum@student.kuleuven.be

Promoter and co-promoter:
Prof. dr. Jean Steyaert and prof. dr. Johan Van Hove

With support of:



Maud & Vic Foundation
In search 4 nkx



#TEAM MIKAERE

